



Partial Hand SOLUTIONS, LLC



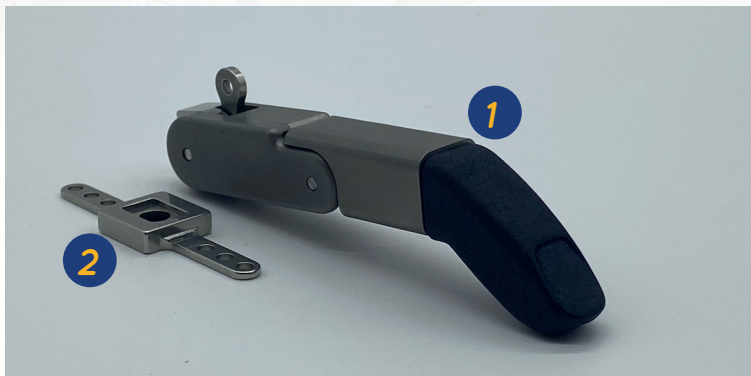
Technical Instructions Titan Flex

PACKAGE CONTENTS

- (1) Titan Flex Assembly
- (1) Grip Tip (installed)
- (1) Rubber Padding
- (1) Loctite 242
- (1) Torx wrench

RECOMMENDED TOOLS AND SUPPLIES

- #2 Phillips screwdriver



Titan Flex Assembly

1. Titan Flex
2. Mount



Included Items

1. Grip Tip
2. Torx wrench
3. Loctite 242
4. Rubber palm pad (not shown)

Mounting Instructions

Titan Flex fingers are fabricated directly into the socket; no additional mounting hardware is necessary.

Fabrication

Note: *College Park Industries and Partial Hand Solutions do not provide fabrication services. As fabrication of sockets for thumbs, partial fingers, and fingers are not routine for most facilities, the use of a fabricator, such as SPS National Labs in Cromwell, CT, is recommended.*

The typical fabrication process has the following steps:

- a. A silicone cast is made and provided to the fabricator along with the fabrication form.
- b. The mold is modified by the fabrication center
- c. The socket is then returned to the clinician for patient fitting based on instructions from fabrication form.
- d. If the socket fits appropriately, the fingers can be aligned by contouring the metal tabs and apply a small amount of FabTech adhesive to the tabs only. Do not cover Philips head screw.
- e. Hold finger in place until FabTech cures. Continue similar process for remaining fingers.
- f. Once fitting and alignment are successful, send back to fabrication center for final fabrication.
- g. The definitive socket is sent back to the clinician for final fitting and delivery.
- h. If desired, rubber padding is cut to size and glued on the socket to create a surface with more grip.

Adjustments

- The torx screws on the side of the finger should not be overtightened. Apply Loctite to the threads only.
- Apply Loctite 242 to the Phillips mounting screw at base of finger.
- Due to normal wear and tear, the Titan Flex may need to be serviced over time. The finger should be removed by removing the Phillips mounting screw and returned to manufacturer for service. Do not disassemble.

Additional Considerations/Tech Tips

- If using a silicone socket, apply a small amount of water or Cal Stat lubricant to limb to dampen skin. Push limb into prosthesis.
- To remove prosthesis, hold prosthesis with other hand and pull your limb out of prosthesis or consult with your prosthetist or therapist on proper technique.

Positioning the Finger

The Titan Flex can be positioned in several ways:



Option 1- Connect cable to loop and a pull on the cable will cause fingers to automatically flex. The cable is typically connected to a forearm cuff and wrist flexion would apply tension to the cable.

Option 2- Applying pressure to the back of the finger will cause the finger to ratchet into flexion. To extend the finger back the cable would need to be pulled to disengage the lock and then the finger can be repositioned manually.

Option 3- Momentum can also cause the fingers to flex. By rapidly flexing the wrist with a sudden stop will cause the fingers to automatically ratchet into flexion.

Cautions/Warnings

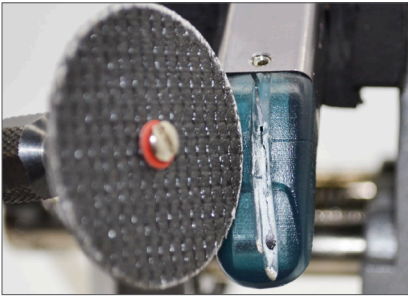
- Do not expose this product to corrosive or caustic materials, salt water or pH and temperature extremes.
- New users should start with a wearing schedule and ease in to a full day of use.
- Do not apply Loctite to fasteners unless indicated in the instructions.
- Do not disassemble finger except as specified in these instructions.

Inspection/Maintenance

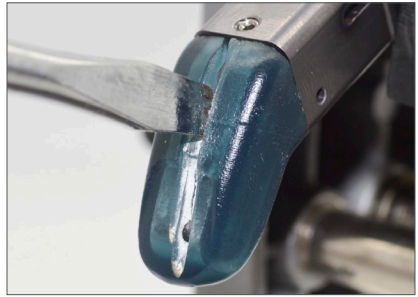
- Users should clean the inside of the prosthesis and silicone liner with anti-bacterial wipes daily.
- Visual/Audible signs of wear, cracks, damage, etc.
- Ensure that the joint moves freely without obstruction.
- Replace grip tip as needed

Repairs/Replacements

Replacing the Fingertip - Due to wear and tear, a fingertip may become damaged and need to be replaced. Fingertips are available as replacement parts.



Secure finger and using a dremel tool cut a channel down the length of the tip. Take caution to not cut in to titanium.



Wedge a flat-edge screw driver into the slot created and pry tip off finger tip.



Apply a small amount of super glue on either side of the inner surface of the tip



Press fingertip onto finger and hold in place until glue sets. Use rubber padding to prevent slipping.

Warranty: 1 year

Notes



TECHNICAL ASSISTANCE/ EMERGENCY SERVICE 24-7-365

College Park's regular office hours are Monday thru Friday, 8:30 am - 5:30 pm (EST). After hours, an emergency Technical Service number is available by calling College Park's main line.



Partial Hand
SOLUTIONS, LLC



Partial Hand Solutions
86 Ladyslipper Lane
Southington, CT USA 06489
+1 (860) 538-5532



EMERGO EUROPE
Prinsessegracht 20,
2514 AP
The Hague, Netherlands

MADE IN THE USA
986 INS PHS FLT 210601

